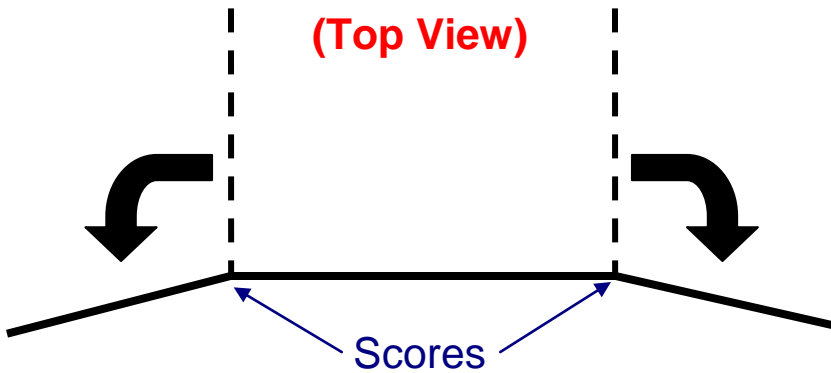


One-Piece Carrel Set-Up Instructions For Desktops

Step One



Open the Desktop Carrel.
Fold the carrel inside out
to eliminate corner "tension".
Return the sides to 90° angles
with front logo facing out.



Step Two

Fold the bottom wings
outward at scores.
Crease the scores to
eliminate "tension".

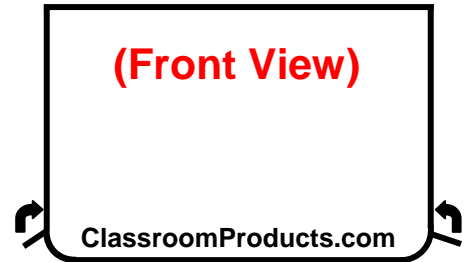
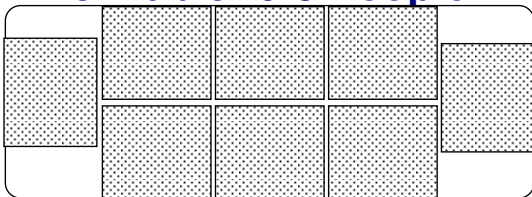


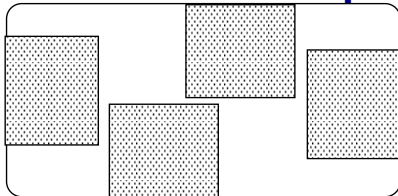
Table Top Set-Up

DO NOT Fold Side Wings

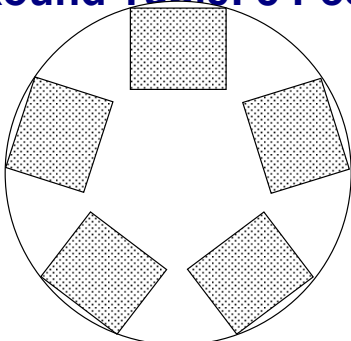
8' Table: 6-8 People



6' Table: 3-4 People

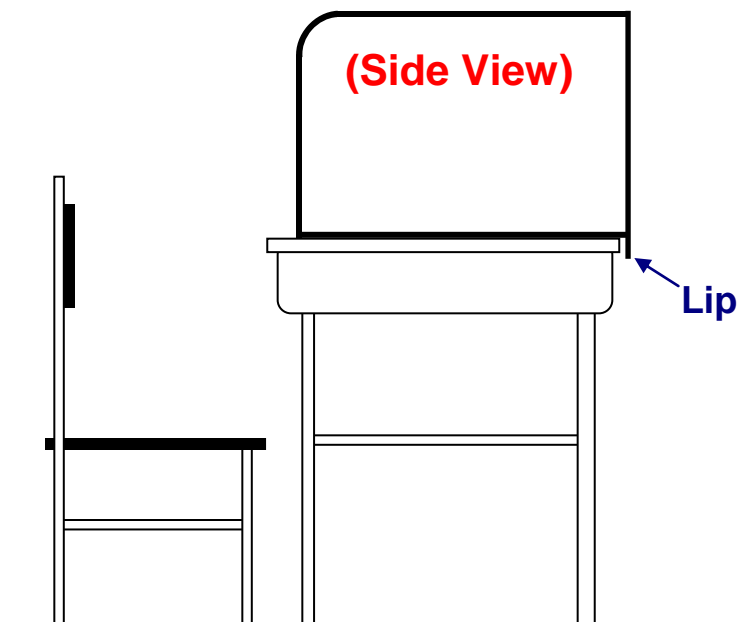


6' Round Table: 5 People



Step Three

With the wings out,
hang the lip over the
front of the desk. (Optional)



Classroom Products LLC

3313 Woonsocket Street • Springfield, Ohio • 45503

1-800-315-0741 • Fax # 937-342-1703

www.classroomproducts.com